

StandardKnapp StandardKnapp

an EMPLOYEE owned company

TRAY TRANSPORT DOUBLE BLANK DETECTOR

**UPGRADE FOR:
Model 296 Continuum
Traypacker**

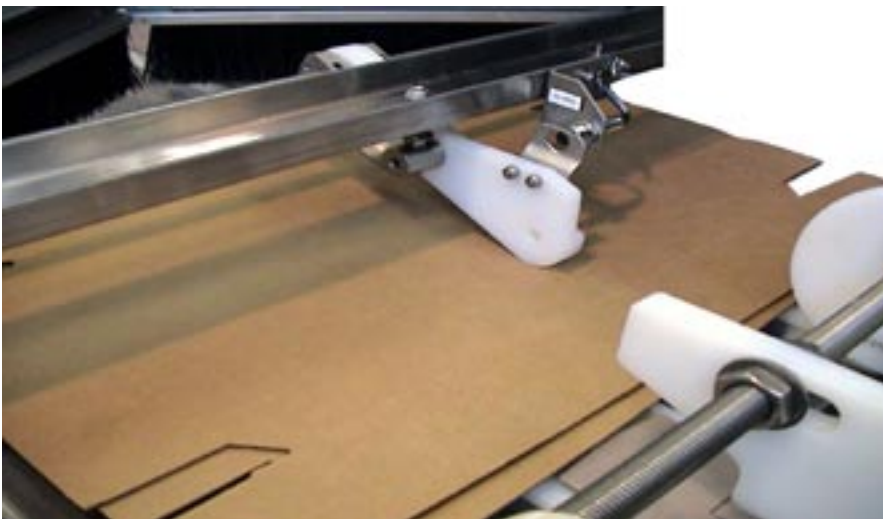


Figure 1.1 - Double Blank Detector detecting a Double Blank

Photo eye blocked as multiple blanks are detected.



Figure 1.2 - Double blank causing detector to move upward and trip sensor

Benefits

- Located immediately after tray tower, will detect thickness of double tray blanks.
- Brings machine to an end of cycle stop for easy removal of extra blank.
- Eliminates double tray jams in "hard to reach" product/tray merge area.
- Increase machine uptime and product output.

Call the Standard-Knapp Sales Department at
1-800-628-9565 ext. 239 for ordering information.

Standard-Knapp, Inc.
127 Main Street
Portland, CT 06480
1-800-628-9565
(fax) 860-342-0783
www.standard-knapp.com
info@standard-knapp.com

Standard Knapp Standard Knapp

an EMPLOYEE owned company

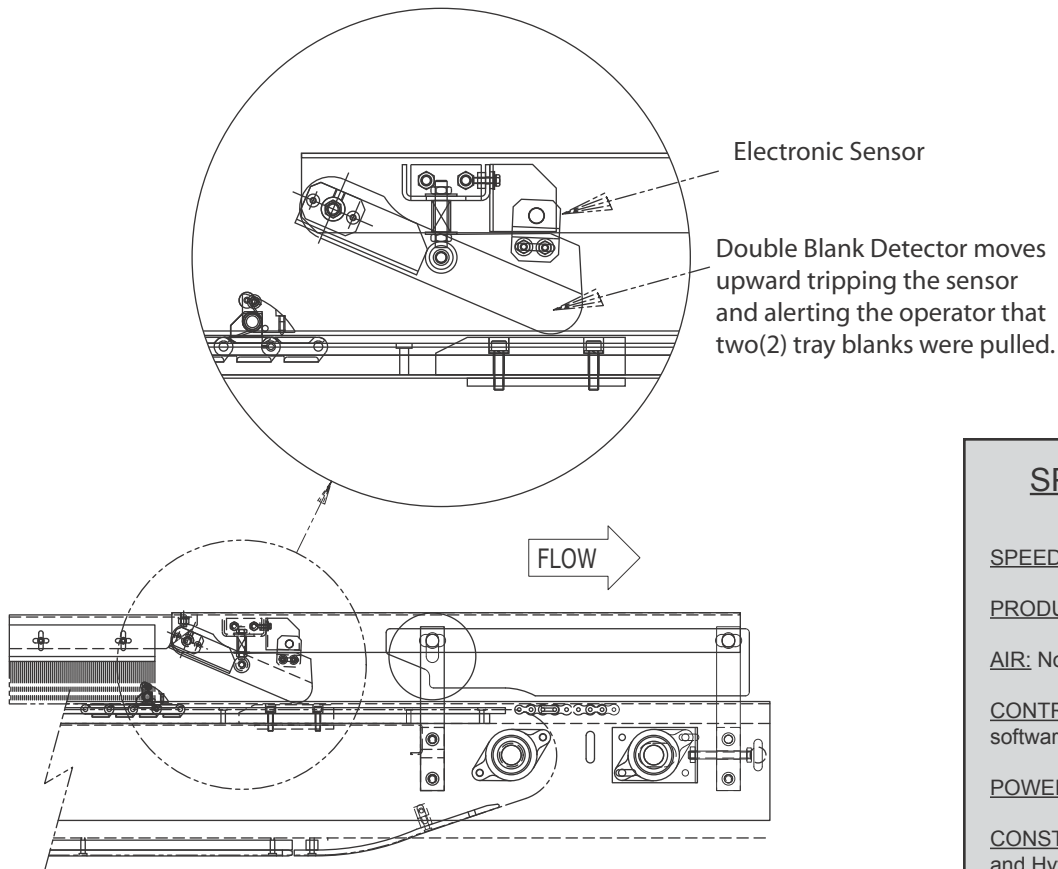


Figure 1.3 - Side View of Tray Transport Double Tray Blank Detector

SPECIFICATIONS

SPEED: No Limits

PRODUCT RANGE: Unchanged

AIR: None required

CONTROLS: Photo eye and software logic included.

POWER: 24 Volt

CONSTRUCTION: Stainless Steel and Hyfax plastic

ESTIMATED WEIGHT: 10 lbs.

INSTALLATION: Standard-Knapp service recommended

TIME TO INSTALL: 3-4 hours

ADDITIONAL UPGRADE KITS AVAILABLE FOR YOUR 296 CONTINUUM

- TRAY BLANK INDEXER
- TRAY TRANSPORT DEBRIS BRUSH
 - FILM SPINDLE SUPPORTS
- TRAY MAGAZINE BLANK RETAINER

Note: The Double Blank Detection Upgrade works well with the Tray Transport Debris Brush Upgrade.