

NEW Continuum™

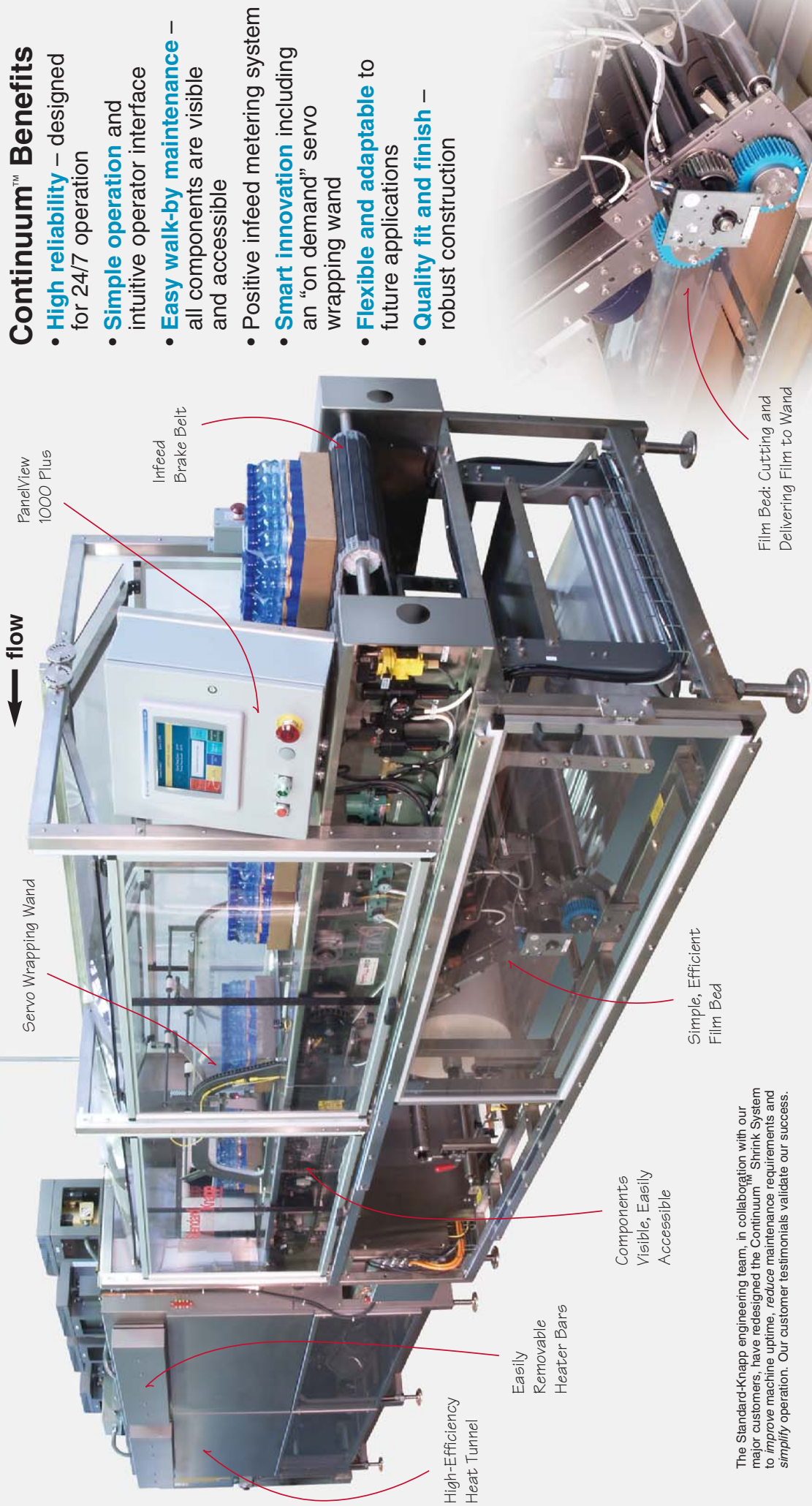


***Continuous Motion
Shrink Wrapper***

StandardKnapp
StandardKnapp

an EMPLOYEE owned company

Continuum™ Shrink Wrapper



← flow

PanelView
1000 Plus

Infeed
Brake Belt

Servo Wrapping Wand

Components
Visible, Easily
Accessible

High-Efficiency
Heat Tunnel

Easily
Removable
Heater Bars

Simple, Efficient
Film Bed

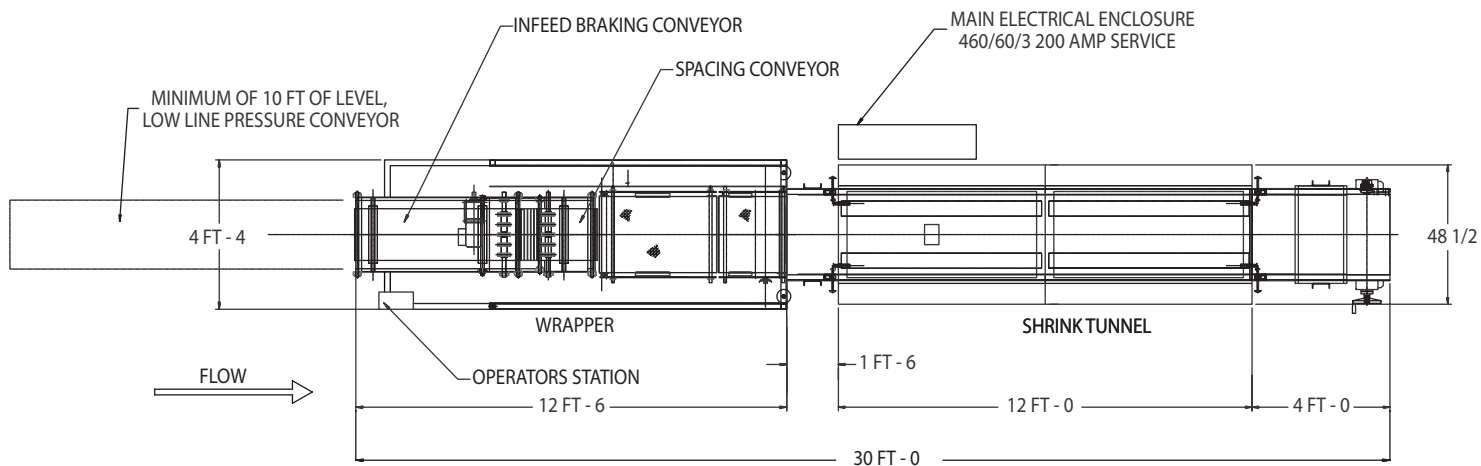
Film Bed: Cutting and
Delivering Film to Wand

- Continuum™ Benefits**
- **High reliability** – designed for 24/7 operation
 - **Simple operation** and intuitive operator interface
 - **Easy walk-by maintenance** – all components are visible and accessible
 - Positive infeed metering system
 - **Smart innovation** including an “on demand” servo wrapping wand
 - **Flexible and adaptable** to future applications
 - **Quality fit and finish** – robust construction

The Standard-Knapp engineering team, in collaboration with our major customers, have redesigned the Continuum™ Shrink System to improve machine uptime, reduce maintenance requirements and simplify operation. Our customer testimonials validate our success.



Continuum™ Servo Wrapping Wand



Continuum™ Floor Plan

Specifications*

Model: 596s
Speeds: 60, 80 TPM
Controls: Allen-Bradley ControlLogix
Servo Drives: Ultra 3000 or Kinetics
Interface (HMI): PanelView 1000 Plus
Electrical Supply: 200 AMP drop
Air Supply: 80 psi with 1/2 NPT

Motors:
Main drive: 2 HP
Tunnel: 2 HP
Wrapper: Servo
Film Feed: Servo
Infeed Metering: Powerflex 40 VFD

* Standard-Knapp is committed to continuous product improvement. Specifications are subject to change without notice.



STANDARD-KNAPP, INC.

63 Pickering Street, Portland, CT 06480 U.S.A.

SALES PHONE: (860) 342-1100, ext. 239

SALES FAX: (860) 342-1557

EMAIL: info@standard-knapp.com

WEB SITE: www.standard-knapp.com